

Automotive KromaxTM

Pearlescent Pigments

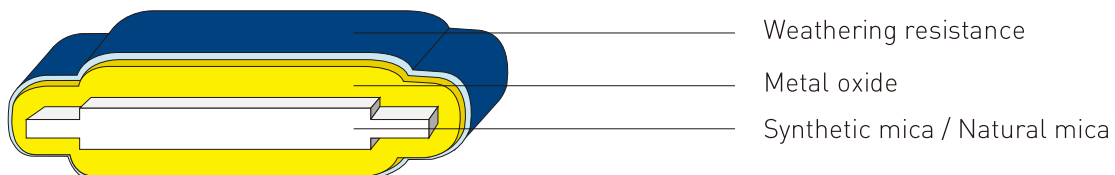


The world's leader in
quality effect pigment technology



Automotive KromaxTM Product Info.

- Excellent color strength and high color purity for exterior use.
 - Synthetic mica and natural mica based pearlescent pigments.
 - High weathering resistance by surface treatment.
 - High compatibility in various resin type.
- Weathering resistance and compatibility by surface treatment.
Easy to dispersion in various solvent system.
No contain any hazard materials to health and Environment.
Conform international regulations. (REACH, RoHs etc.)



High
QUALITY

Various
PRODUCTS

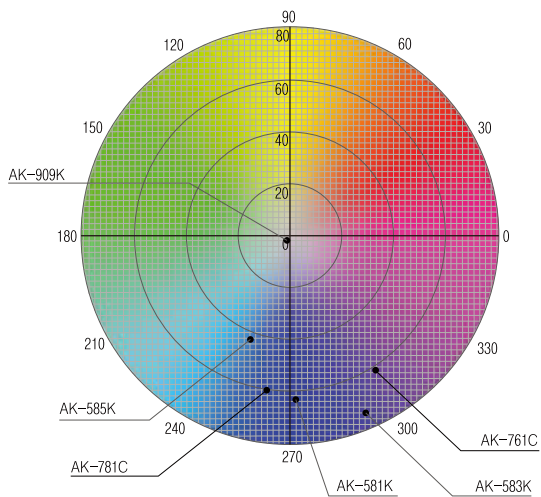
Timely
DELIVERY

Rational
PRICE

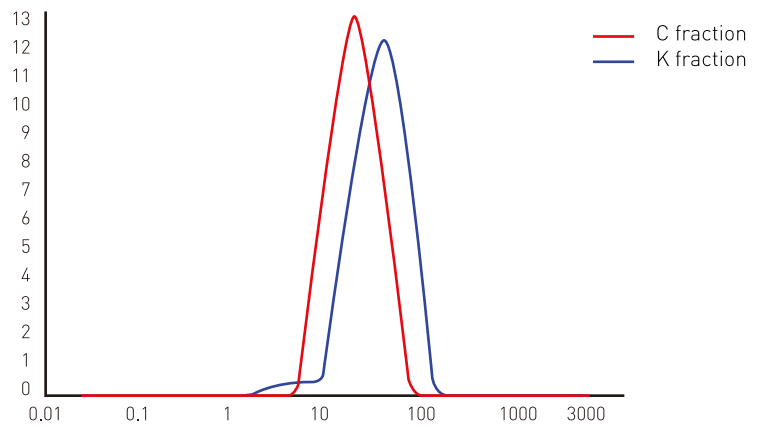
Rapid
FEED-BACK

Color coordinates of spray panel

pigments rate : 16wt%, on black substrate



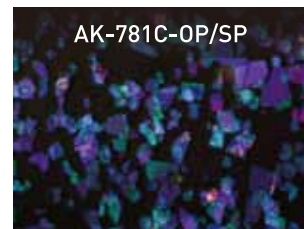
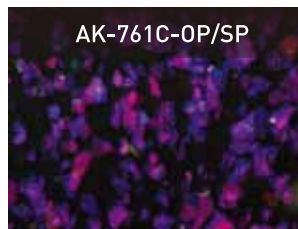
Particle Size Distribution



- Plastic automotive model spray pictures (pigments rate : 4wt%, on black substrate)



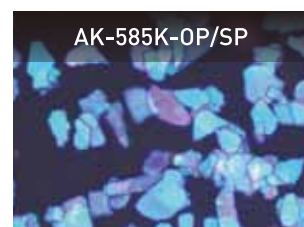
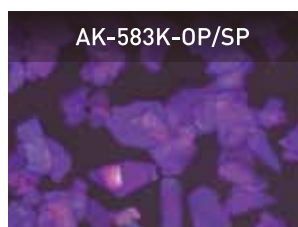
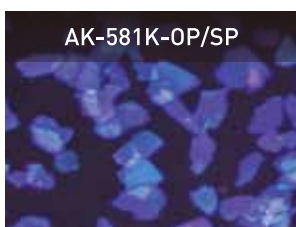
- Microscopic Images (X500) pigments rate : 2wt%, on black substrate



- Plastic automotive model spray pictures (pigments rate : 4wt%, on black substrate)



- Microscopic Images (X500) pigments rate : 2wt%, on black substrate



Automotive KromaxTM Pearlescent Pigments

Automotive KromaxTM series are synthetic mica and natural mica based pearlescent pigments treated for exterior use with weather resistance and compatibility.

Automotive KromaxTM series have enhanced chroma than existing interference effect pigments, innovatively lessened the color difference of each particles. Generally existing interference pearlescent pigments have the color difference of each particles as manufacturing process nature but Automotive KromaxTM series have superior chroma improved by color difference of each particle as own developed unique technologies.

By using Automotive KromaxTM series, you can feel excellent chroma and sparkling effect never seen before.

Special Features

- Synthetic mica and natural mica based pearlescent pigments
- Superior interference chroma
- Very higher color purity and excellent sparkling effect
- Compatibility in various resin type
- Easy to dispersion
- Easy to apply for various field of industry

Applications

- Automotive coating
- Automotive refinish paints
- Exterior coating



Automotive Kromax™ Pearlescent Pigments

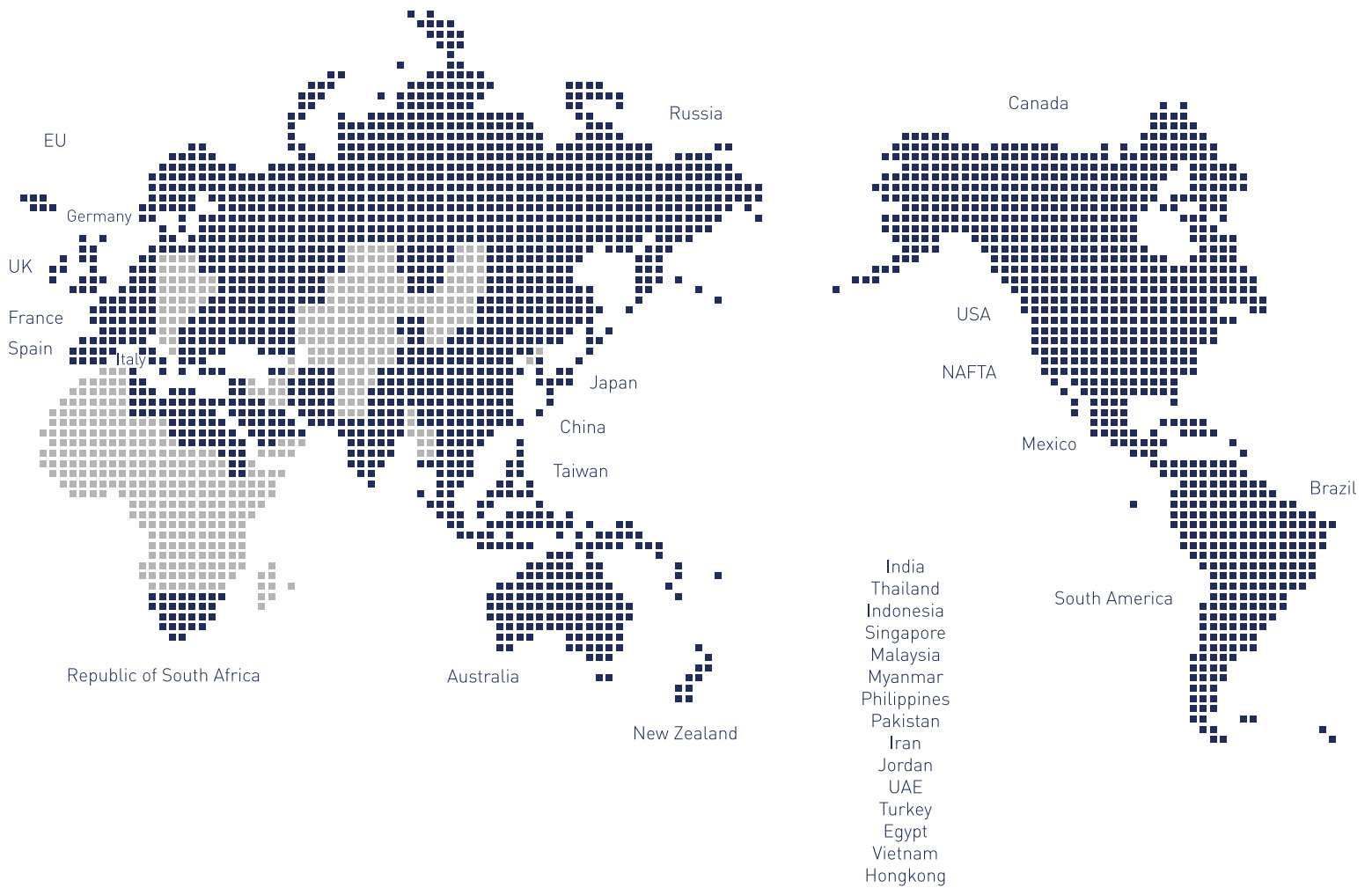


Automotive Kromax™ Pearlescent Pigments Technical Data

Code	Product Name	Particle Size(μm)		pH (10% Sol.)	Composition			
		[D10-D90]	[D50]		KMg ₃ AlSi ₃ O ₁₀ F ₂	Mica	SnO ₂	TiO ₂
AK-909K-OP/SP	Automotive Kromax™ Splendor White	9 - 35	17 - 21	4 - 8	○	○	○	○
AK-761C-OP/SP	Automotive Kromax™ Corona Violet	7 - 27	11 - 15	4 - 8	○	○	○	○
AK-781C-OP/SP	Automotive Kromax™ Corona Blue	7 - 27	11 - 15	4 - 8	○	○	○	○
AK-581K-OP/SP	Automotive Kromax™ Splendor Ocean Blue	7 - 37	18 - 22	4 - 8		○	○	○
AK-583K-OP/SP	Automotive Kromax™ Splendor Indigo	7 - 37	18 - 22	4 - 8		○	○	○
AK-585K-OP/SP	Automotive Kromax™ Splendor Aqua	7 - 37	18 - 22	4 - 8		○	○	○

CQV GLOBAL NETWORK

“World Leading Pigments Material Provider ”



Creation of Quality Value

씨큐브 주식회사

충북 진천군 진천읍 성중로 144번지

T. 043 531 2500

F. 043 536 0314

<http://www.cqv.co.kr>

144, Seongjung-ro, Jincheon-Eup, Jincheon-Gun,
ChungCheong Buk-Do, Korea

T. 82 43 531 2500

F. 82 43 536 0314

<http://www.cqv.co.kr>