

COSMETIC USE

COSMETICA™

Soft Focus Series



The World Quality Leader in
Effect Pigments Technology >>>>>>



Cosmetica

製品情報

特長

- 二酸化チタンや酸化鉄を、合成マイカ上に塗布し
- ソフトフォーカス効果 真珠光沢顔料
- 優れた隠蔽力 と低光沢
- 低脂フィーリング効果のエマルジョン
- 優れた触覚プロパティ
- 滑らかでシルキーな効果

アプリケーション

- フェイスパウダー(化粧品)
- スキンケア(化粧品)
- コンパクト(化粧品)
- 口紅
- アイシャドーとブラシ
- バス&ボディ製品
- 美容製品

仕様

- **Particle Size (D10 - D90) : 2 ~ 13 μ m**
 - **pH : 5.0 ~ 10.0 (Interference, Metallic Gold)**
 - **pH : 7.0 ~ 11.0 (Metallics)**
 - **Loss on Drying : 0.5% max.**
 - **Trace Elements**
- Conforms FDA & EU Regulations.

COSMETIC Soft Focus Product List

COSMETICA Soft Focus White Series

| Product Name | Code | Size (µm) |
|----------------------------|-------|-----------|
| Cosmetica Soft Focus White | 9003F | 2-16 |

SHARON Soft Focus Interference Series

| Product Name | Code | Size (µm) |
|--------------------------|-------|-----------|
| Sharon Soft Focus Gold | 7001F | 2-13 |
| Sharon Soft Focus Red | 7401F | 2-13 |
| Sharon Soft Focus Violet | 7601F | 2-13 |
| Sharon Soft Focus Blue | 7801F | 2-13 |
| Sharon Soft Focus Green | 7901F | 2-13 |

BLONDIEE Soft Focus Metallic Series

| Product Name | Code | Size (µm) |
|----------------------------|-------|-----------|
| Blondiee Soft Focus Gold | 6001F | 2-13 |
| Blondiee Soft Focus Bronze | 6200F | 2-13 |
| Blondiee Soft Focus Copper | 6400F | 2-13 |
| Blondiee Soft Focus Russet | 6600F | 2-13 |

Heavy Metal Specification

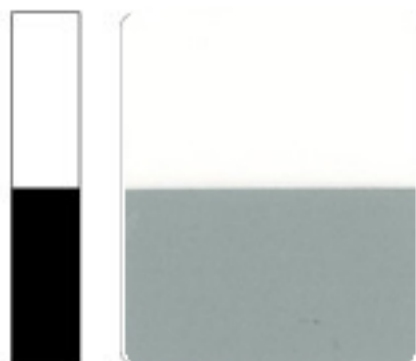
| | Hg | As | Pb | Cd | Ba | Sb | Cu | Cr | Ni | Zn |
|---------------------------------------|-------|-------|--------|-------|--------|--------|--------|---------|---------|---------|
| FDA(TiO ₂) | 1 ppm | 1 ppm | 10 ppm | | | 2 ppm | | | | |
| FDA(Fe ₂ O ₃) | 3 ppm | 3 ppm | 10 ppm | | | | | | | |
| E171(TiO ₂) | 1 ppm | 3 ppm | 10 ppm | 1 ppm | | 50 ppm | | | | 50 ppm |
| E172(Fe ₂ O ₃) | 1 ppm | 5 ppm | 20 ppm | 5 ppm | 50 ppm | | 50 ppm | 100 ppm | 200 ppm | 100 ppm |
| White & Interference | 1 ppm | 1 ppm | 1 ppm | 1 ppm | 10 ppm | 1 ppm | 10 ppm | 10 ppm | 10 ppm | 10 ppm |
| Metallic Gold | 1 ppm | 1 ppm | 3 ppm | 1 ppm | 30 ppm | 1 ppm | 30 ppm | 30 ppm | 50 ppm | 40 ppm |
| Metallics | 1 ppm | 1 ppm | 3 ppm | 1 ppm | 30 ppm | 1 ppm | 30 ppm | 30 ppm | 60 ppm | 60 ppm |

- FDA : The US Code of Federal Regulation, 21 CFR
- EU : Cosmetics Directive 76/768/EEC



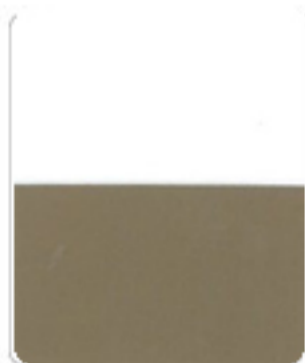
COSMETIC Soft Focus Pearl Pigment

COSMETICA Soft Focus White Series



Cosmetica Soft Focus White
9003F
Size(μm) 2-16

SHARON Soft Focus Interference Series



Sharon Soft Focus Gold
7001F
Size(μm) 2-13



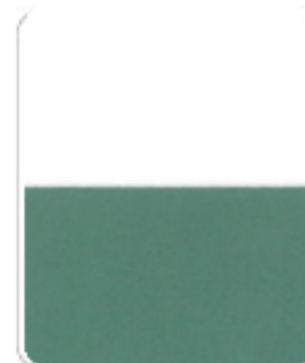
Sharon Soft Focus Red
7401F
Size(μm) 2-13



Sharon Soft Focus Violet
7601F
Size(μm) 2-13

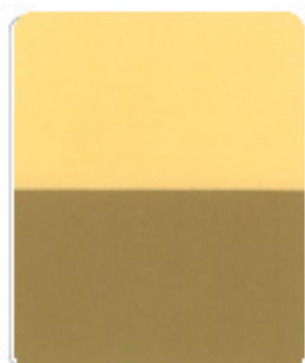


Sharon Soft Focus Blue
7801F
Size(μm) 2-13



Sharon Soft Focus Green
7901F
Size(μm) 2-13

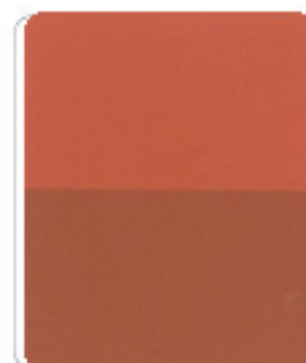
BLONDIEE Soft Focus Metallic Series



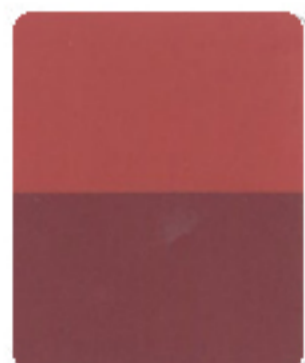
Blondiee Soft Focus Gold
6001F
Size(μm) 2-13



Blondiee Soft Focus Bronze
6200F
Size(μm) 2-13



Blondiee Soft Focus Copper
6400F
Size(μm) 2-13



Blondiee Soft Focus Russet
6600F
Size(μm) 2-13

COSMETICA Soft Focus White Pearl Technical Data

| Code | Product Name | Particle Size(μm) (D10-D90) | Particle Size(μm) (D50) | pH (10% Sol.) | Composition | | | |
|-------|----------------------------|---|---|------------------|---|------------------|------------------|--------------------------------|
| | | | | | KMg ₃ AlSi ₃ O ₁₀ F ₂ | SnO ₂ | TiO ₂ | Fe ₂ O ₃ |
| 9003F | Cosmetica Soft Focus White | 2 - 16 | 6 - 8 | 5 - 10 | ○ | ○ | ○ | |

SHARON Soft Focus Interference Pearl Technical Data

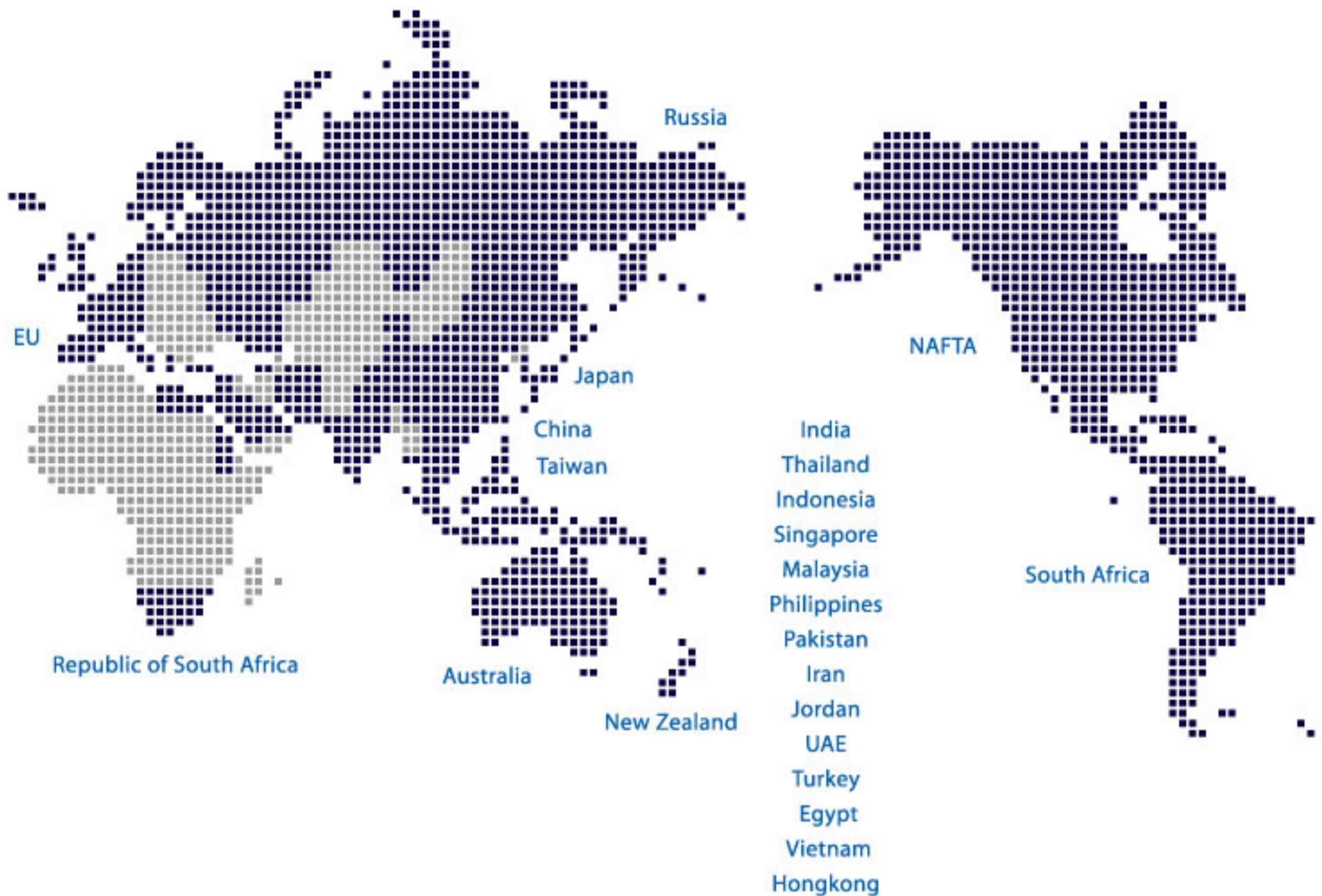
| Code | Product Name | Particle Size(μm) (D10-D90) | Particle Size(μm) (D50) | pH (10% Sol.) | Composition | | | |
|-------|--------------------------|---|---|------------------|---|------------------|------------------|--------------------------------|
| | | | | | KMg ₃ AlSi ₃ O ₁₀ F ₂ | SnO ₂ | TiO ₂ | Fe ₂ O ₃ |
| 7001F | Sharon Soft Focus Gold | 2 - 13 | 5 - 7 | 5 - 10 | ○ | ○ | ○ | |
| 7401F | Sharon Soft Focus Red | 2 - 13 | 5 - 7 | 5 - 10 | ○ | ○ | ○ | |
| 7601F | Sharon Soft Focus Violet | 2 - 13 | 5 - 7 | 5 - 10 | ○ | ○ | ○ | |
| 7801F | Sharon Soft Focus Blue | 2 - 13 | 5 - 7 | 5 - 10 | ○ | ○ | ○ | |
| 7901F | Sharon Soft Focus Green | 2 - 13 | 5 - 7 | 5 - 10 | ○ | ○ | ○ | |

BLONDIEE Soft Focus Metallic Pearl Technical Data

| Code | Product Name | Particle Size(μm) (D10-D90) | Particle Size(μm) (D50) | pH (10% Sol.) | Composition | | | |
|-------|----------------------------|---|---|------------------|---|------------------|------------------|--------------------------------|
| | | | | | KMg ₃ AlSi ₃ O ₁₀ F ₂ | SnO ₂ | TiO ₂ | Fe ₂ O ₃ |
| 6001F | Blondiee Soft Focus Gold | 2 - 13 | 5 - 7 | 5 - 10 | ○ | ○ | ○ | ○ |
| 6200F | Blondiee Soft Focus Bronze | 2 - 13 | 5 - 7 | 7 - 11 | ○ | | | ○ |
| 6400F | Blondiee Soft Focus Copper | 2 - 13 | 5 - 7 | 7 - 11 | ○ | | | ○ |
| 6600F | Blondiee Soft Focus Russet | 2 - 13 | 5 - 7 | 7 - 11 | ○ | | | ○ |

CQV GLOBAL NETWORK

"World Leading Pigment Material Provider"



씨큐브 주식회사

충청북도 진천군 진천읍 송두리 450
T. 043 531 2500
F. 043 536 0314
<http://www.cqv.co.kr>

450 Songdu-Ri, Jincheon-Eup, Jincheon-Gun,
ChungCheong Buk-Do, Korea
T. 82 43 531 2500
F. 82 43 536 0314
<http://www.cqv.co.kr>