

# Esochroma<sup>®</sup>

Cosmetic Multi Color Pearlescent Pigments



The world's leader in  
quality effect pigment technology



# Esochroma<sup>®</sup> Product Info.

- Colored multi-interference color pearlescent pigments.
- Combination of absorption color and interference color.
- Vivid appearance color and brilliant effect.
- Synthetic Fluorhlogopite based pearlescent pigments.

All ingredients were registered in ICID.

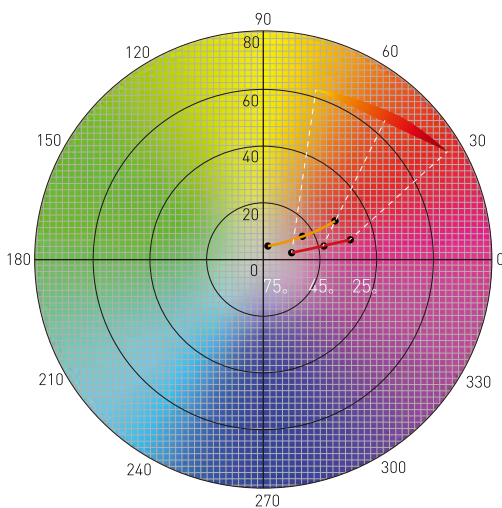
Red, blue and violet color available.

No animal testing and paraben free.

No contain the health and environmental hazard materials.

Conforms global (US, EU, China, Japan etc.) cosmetic regulations.

## Esochroma<sup>®</sup> Rose Series



### EC-7441S

25°	45°	75°
a* : 33.85	a* : 21.79	a* : 13.52
b* : 5.6	b* : 4.11	b* : 2.9

### E-7401S

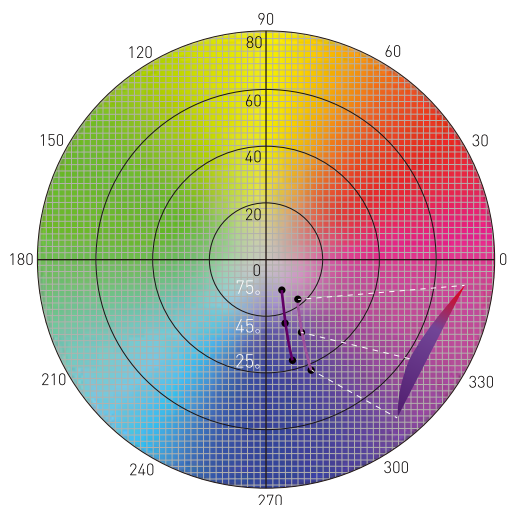
25°	45°	75°
a* : 29.24	a* : 13.03	a* : 3.36
b* : 13.05	b* : 8.75	b* : 5.87

 Eye Visible Color



Microscope

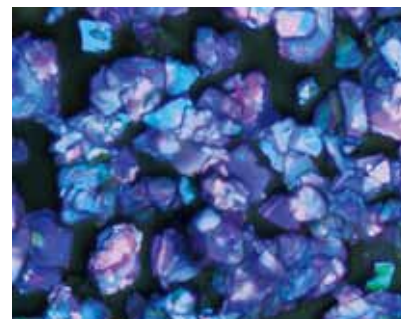
# Esochroma® Iris Series



EC-7661S		
25 <sub>o</sub>	45 <sub>o</sub>	75 <sub>o</sub>
a* : 9.48	a* : 10.69	a* : 8.87
b* : -40.93	b* : -26.86	b* : -15.76

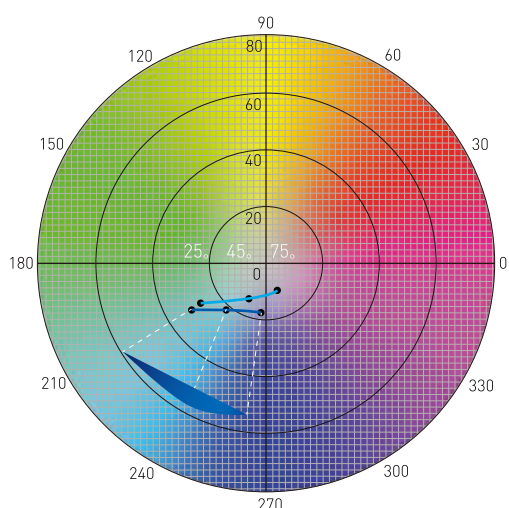
E-7601S		
25 <sub>o</sub>	45 <sub>o</sub>	75 <sub>o</sub>
a* : 8.55	a* : 8.32	a* : 4.68
b* : -38.7	b* : -22.88	b* : -11.52

 Eye Visible Color



Microscope

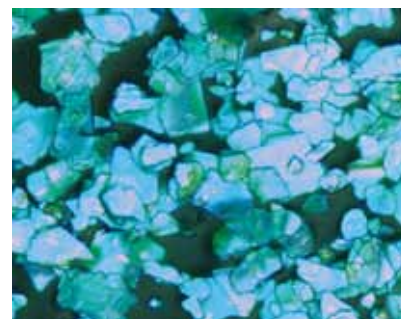
# Esochroma® Aqua Series



EC-7881S		
25 <sub>o</sub>	45 <sub>o</sub>	75 <sub>o</sub>
a* : -29.50	a* : -14.16	a* : -2.39
b* : -18.03	b* : -16.57	b* : -17.15

E-7801S		
25 <sub>o</sub>	45 <sub>o</sub>	75 <sub>o</sub>
a* : -25.15	a* : -8.32	a* : 1.35
b* : -16.19	b* : -14.78	b* : -13.40

 Eye Visible Color



Microscope

# Esochroma<sup>®</sup>

## Cosmetic Multi Color Pearlescent Pigments

It's Esochroma<sup>®</sup> that we coat absorption pigments on the surface of synthetic mica based color travelling pigments.

It's on the basis of synthetic mica based color travelling pigments and Esochroma<sup>®</sup> shows three colors depending on viewing angle and absorption pigments bestow two interference colors on the top.

There are two interference colors at a specific angle on the surface and absorption its own color.

Using Esochroma<sup>®</sup> product which contains absorption pigments, you can save the time as skipping special dispersion process and make various color formulation.

### Special Features

- Sparkle and high chroma pearlescent pigments based synthetic pearlescent pigments
- Easy pigments dispersion
- Multi variable color
- Wide Application

### Applications

- Face powders
- Lipstick
- Eye shadow and blush
- Beauty products
- Foundations



# Esochroma<sup>®</sup>

## Cosmetic Multi Color Pearlescent Pigments Product List

### Esochroma<sup>®</sup> Rose Series

Product Name	Code	Size(μm)
Esochroma <sup>®</sup> Rose Amber	EC-7041S	7-50
Esochroma <sup>®</sup> Rose Ruby	EC-7441S	7-50
Esochroma <sup>®</sup> Rose Amethyst	EC-7641S	7-50
Esochroma <sup>®</sup> Rose Sapphire	EC-7841S	7-50
Esochroma <sup>®</sup> Rose Emerald	EC-7941S	7-50

### Esochroma<sup>®</sup> Iris Series

Product Name	Code	Size(μm)
Esochroma <sup>®</sup> Iris Amber	EC-7061S	7-50
Esochroma <sup>®</sup> Iris Ruby	EC-7461S	7-50
Esochroma <sup>®</sup> Iris Amethyst	EC-7661S	7-50
Esochroma <sup>®</sup> Iris Sapphire	EC-7861S	7-50
Esochroma <sup>®</sup> Iris Emerald	EC-7961S	7-50

### Esochroma<sup>®</sup> Aqua Series

Product Name	Code	Size(μm)
Esochroma <sup>®</sup> Aqua Amber	EC-7081S	7-50
Esochroma <sup>®</sup> Aqua Ruby	EC-7481S	7-50
Esochroma <sup>®</sup> Aqua Amethyst	EC-7681S	7-50
Esochroma <sup>®</sup> Aqua Sapphire	EC-7881S	7-50
Esochroma <sup>®</sup> Aqua Emerald	EC-7981S	7-50

# Esochroma<sup>®</sup>

## Cosmetic Multi Color Pearlescent Pigments

Esochroma<sup>®</sup> Rose Series



Esochroma<sup>®</sup> Rose Amber **EC-7041S** Size( $\mu$ m) 7 - 50



Esochroma<sup>®</sup> Rose Ruby **EC-7441S** Size( $\mu$ m) 7 - 50



Esochroma<sup>®</sup> Rose Amethyst **EC-7641S** Size( $\mu$ m) 7 - 50



Esochroma<sup>®</sup> Rose Sapphire **EC-7841S** Size( $\mu$ m) 7 - 50



Esochroma<sup>®</sup> Rose Emerald **EC-7941S** Size( $\mu$ m) 7 - 50

# Esochroma<sup>®</sup>

## Cosmetic Multi Color Pearlescent Pigments Technical Data

Code	Product Name	Particle Size( $\mu\text{m}$ )		pH	Composition				
		(D10-D90)	(D50)	(10% Sol.)	KMg <sub>3</sub> AlSi <sub>3</sub> O <sub>10</sub> F <sub>2</sub>	SnO <sub>2</sub>	TiO <sub>2</sub>	Carmines (CI 75470)	Ferric Ferrocyanide (CI 77510)
EC-7041S	Esochroma <sup>®</sup> Rose Amber	7-50	18 - 25	5 - 8	○	○	○	○	
EC-7441S	Esochroma <sup>®</sup> Rose Ruby	7-50	18 - 25	5 - 8	○	○	○	○	
EC-7641S	Esochroma <sup>®</sup> Rose Amethyst	7-50	18 - 25	5 - 8	○	○	○	○	
EC-7841S	Esochroma <sup>®</sup> Rose Sapphire	7-50	18 - 25	5 - 8	○	○	○	○	
EC-7941S	Esochroma <sup>®</sup> Rose Emerald	7-50	18 - 25	5 - 8	○	○	○	○	

- Carmine(CI No. 75470) is partially soluble above pH 7 and unstable under high temperature.  
Therefore this product should not be heated above 110°C(212°F)

# Esochroma<sup>®</sup>

## Cosmetic Multi Color Pearlescent Pigments

Esochroma<sup>®</sup> Iris Series



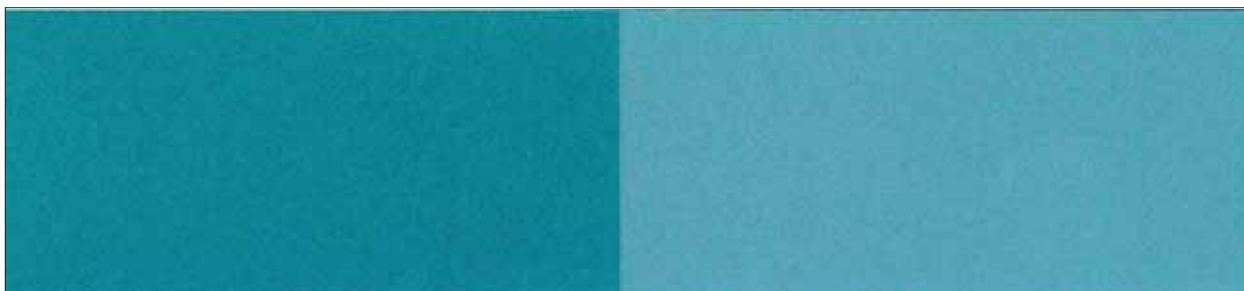
Esochroma<sup>®</sup> Iris Amber **EC-7061S** Size( $\mu$ m) 7 - 50



Esochroma<sup>®</sup> Iris Ruby **EC-7461S** Size( $\mu$ m) 7 - 50



Esochroma<sup>®</sup> Iris Amethyst **EC-7661S** Size( $\mu$ m) 7 - 50



Esochroma<sup>®</sup> Iris Sapphire **EC-7861S** Size( $\mu$ m) 7 - 50



Esochroma<sup>®</sup> Iris Emerald **EC-7961S** Size( $\mu$ m) 7 - 50



# Esochroma®

## Cosmetic Multi Color Pearlescent Pigments Technical Data

Code	Product Name	Particle Size(µm)		pH	Composition				
		(D10-D90)	(D50)	(10% Sol.)	KMg <sub>3</sub> AlSi <sub>3</sub> O <sub>10</sub> F <sub>2</sub>	SnO <sub>2</sub>	TiO <sub>2</sub>	Carmine (CI 75470)	Ferric Ferrocyanide (CI 77510)
EC-7061S	Esochroma® Iris Amber	7-50	18 - 25	5 - 8	○	○	○	○	○
EC-7461S	Esochroma® Iris Ruby	7-50	18 - 25	5 - 8	○	○	○	○	○
EC-7661S	Esochroma® Iris Amethyst	7-50	18 - 25	5 - 8	○	○	○	○	○
EC-7861S	Esochroma® Iris Sapphire	7-50	18 - 25	5 - 8	○	○	○	○	○
EC-7961S	Esochroma® Iris Emerald	7-50	18 - 25	5 - 8	○	○	○	○	○

- Carmine(CI No. 75470) is partially soluble above pH 7 and unstable under high temperature.  
Therefore this product should not be heated above 110°C(212°F)
- Ferric ferrocyanide(CI No. 77510) is unstable to alkali and some salts.  
Therefore this product should not be used in alkaline formulations

# Esochroma<sup>®</sup>

## Cosmetic Multi Color Pearlescent Pigments

Esochroma<sup>®</sup> Aqua Series



Esochroma<sup>®</sup> Aqua Amber **EC-7081S** Size( $\mu$ m) 7 - 50



Esochroma<sup>®</sup> Aqua Ruby **EC-7481S** Size( $\mu$ m) 7 - 50



Esochroma<sup>®</sup> Aqua Amethyst **EC-7681S** Size( $\mu$ m) 7 - 50



Esochroma<sup>®</sup> Aqua Sapphire **EC-7881S** Size( $\mu$ m) 7 - 50



Esochroma<sup>®</sup> Aqua Emerald **EC-7981S** Size( $\mu$ m) 7 - 50

# Esochroma<sup>®</sup>

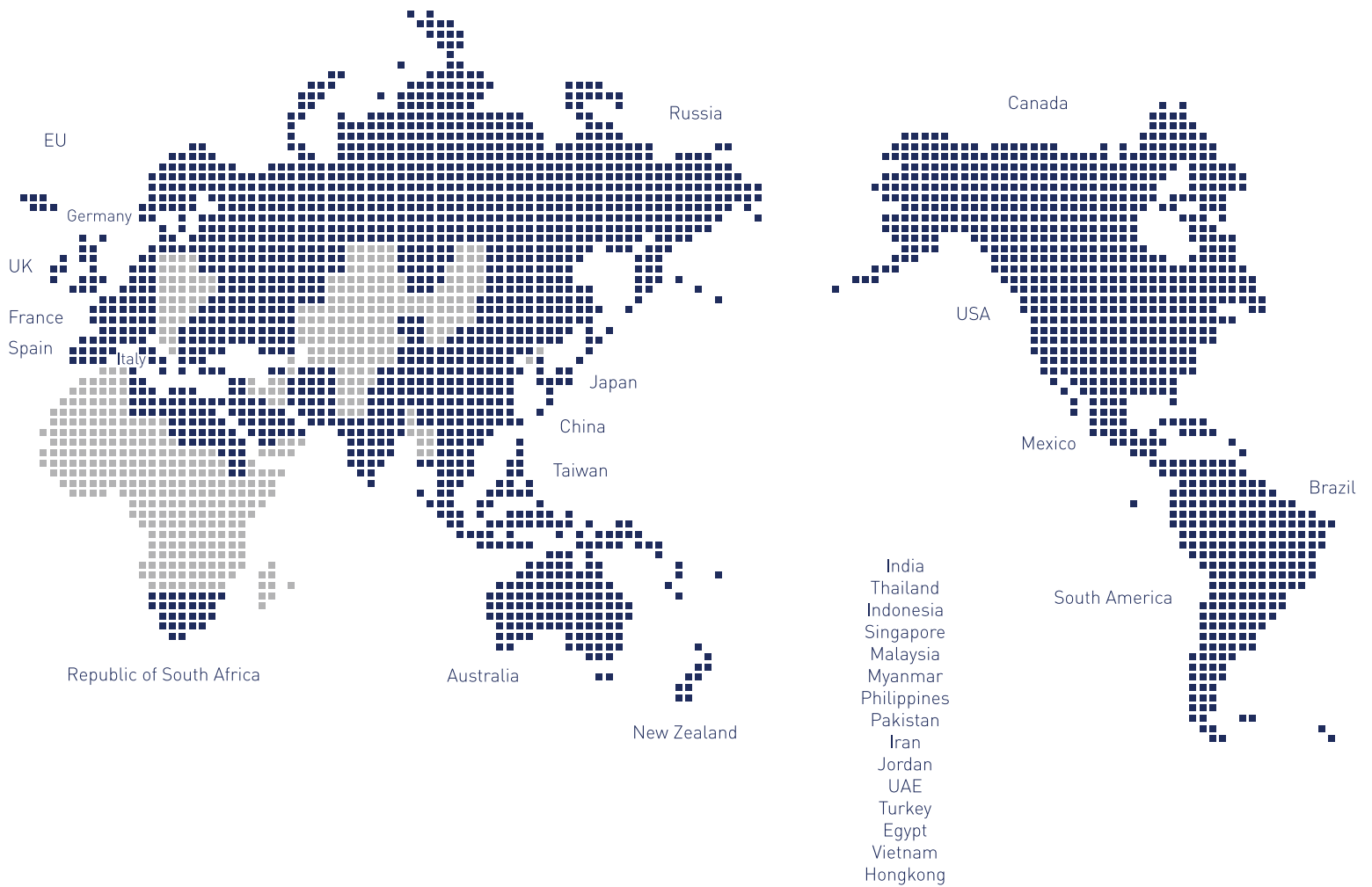
## Cosmetic Multi Color Pearlescent Pigments Technical Data

Code	Product Name	Particle Size(μm)		pH	Composition				
		(D10-D90)	(D50)	(10% Sol.)	KMg <sub>3</sub> AlSi <sub>3</sub> O <sub>10</sub> F <sub>2</sub>	SnO <sub>2</sub>	TiO <sub>2</sub>	Carmines (CI 75470)	Ferric Ferrocyanide (CI 77510)
EC-7081S	Esochroma <sup>®</sup> Aqua Amber	7-50	18 - 25	5 - 8	○	○	○		○
EC-7481S	Esochroma <sup>®</sup> Aqua Ruby	7-50	18 - 25	5 - 8	○	○	○		○
EC-7681S	Esochroma <sup>®</sup> Aqua Amethyst	7-50	18 - 25	5 - 8	○	○	○		○
EC-7881S	Esochroma <sup>®</sup> Aqua Sapphire	7-50	18 - 25	5 - 8	○	○	○		○
EC-7981S	Esochroma <sup>®</sup> Aqua Emerald	7-50	18 - 25	5 - 8	○	○	○		○

- Ferric ferrocyanide(CI No. 77510) is unstable to alkali and some salts.  
Therefore this product should not be used in alkaline formulations

# CQV GLOBAL NETWORK

“World Leading Pigments Material Provider ”



Creation of Quality Value

## 씨큐브 주식회사

충북 진천군 진천읍 성중로 144번지

T. 043 531 2500

F. 043 536 0314

<http://www.cqv.co.kr>

144, Seongjung-ro, Jincheon-Eup, Jincheon-Gun,  
ChungCheong Buk-Do, Korea

T. 82 43 531 2500

F. 82 43 536 0314

<http://www.cqv.co.kr>