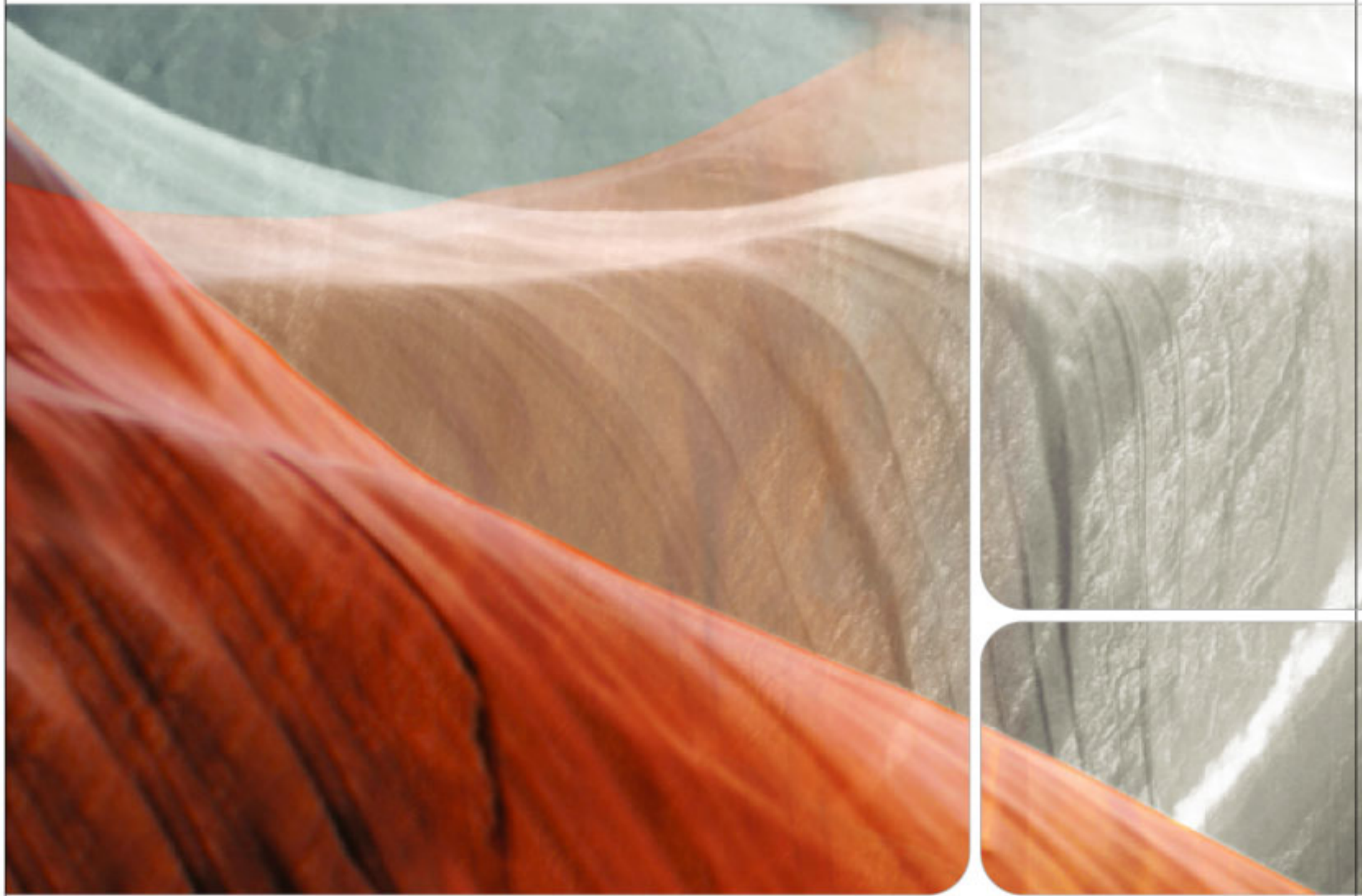


INDUSTRIAL USE

# REFLEX™

Arcane Series



*The World Quality Leader in*  
**Effect Pigments Technology**



# Reflex Arcane

## 製品情報

### 特長

- 二酸化チタンや酸化鉄を、合成マイカ上に塗布し
- ソフトフォーカス効果 真珠光沢顔料
- 優れた隠蔽力 と低光沢
- 優れた触覚プロパティ
- 滑らかでシルキーな効果

### アプリケーション

- 塗料
- プラスチック
- グラビア、フレキソ印刷
- インキとオフセット印刷
- 壁紙
- フローリング
- 人工皮革
- パウダーコーティング
- 紙のコーティング

### 仕様

- **Particle Size (D10 - D90)** : 2 ~ 13 $\mu$ m
- **pH** : 5.0 ~ 10.0 (Interference, Metallic Gold)
- **pH** : 7.0 ~ 11.0 (Metallics)
- **Loss on Drying** : 0.5% max.
- **Trace Elements**
  - Cd, Hg, Pb, Cr<sup>6+</sup> Free
  - PBBs, PBDEs Free

## REFLEX Arcane Product List

### *REFLEX Arcane White Series*

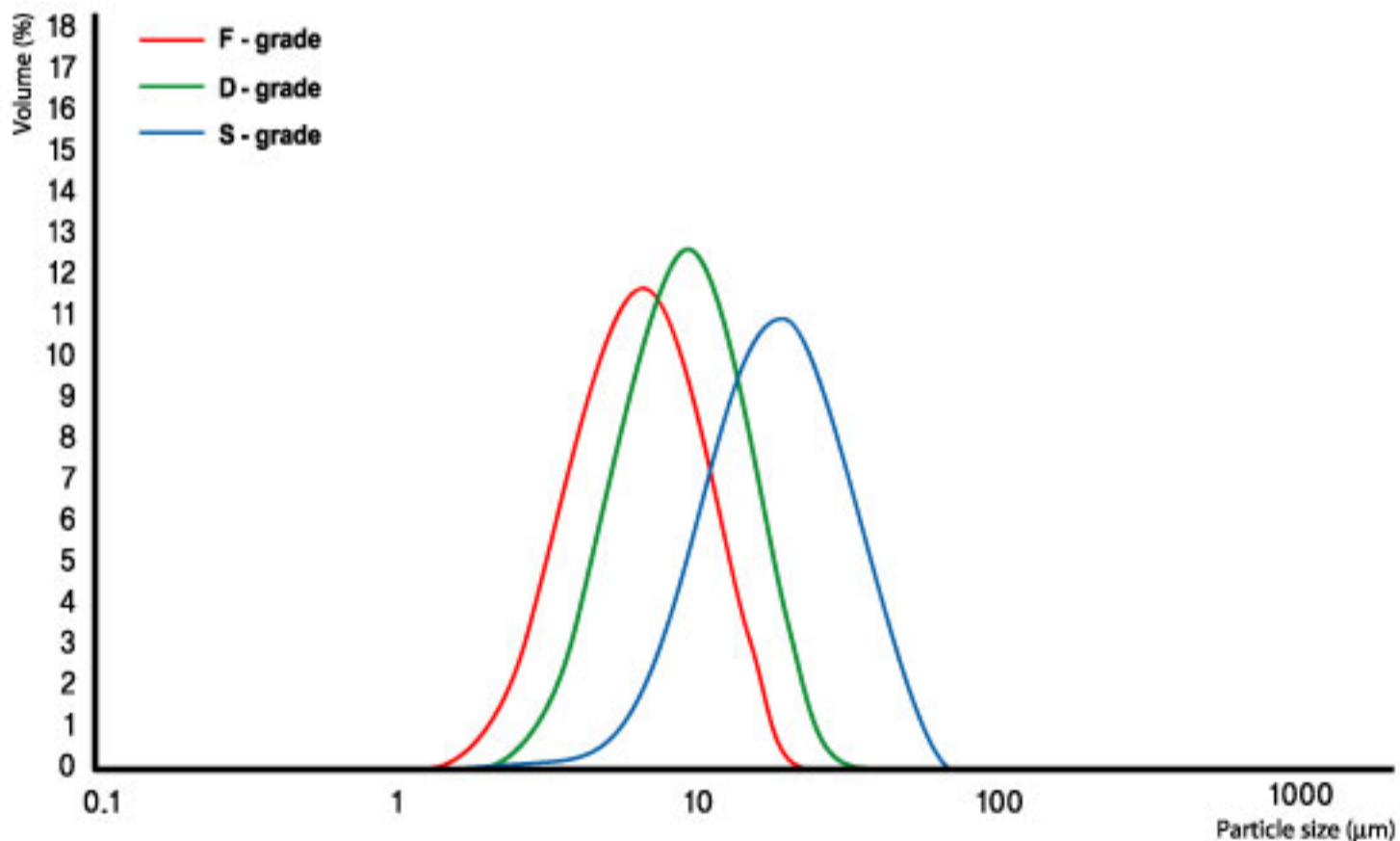
Product Name	Code	Size (µm)
Reflex Rutile Arcane White	R-903F	2-16

### *REFLEX Arcane Interference Series*

Product Name	Code	Size (µm)
Reflex Rutile Arcane Gold	R-701F	2-13
Reflex Rutile Arcane Red	R-741F	2-13
Reflex Rutile Arcane Violet	R-761F	2-13
Reflex Rutile Arcane Blue	R-781F	2-13
Reflex Rutile Arcane Green	R-791F	2-13

### *REFLEX Arcane Metallic Series*

Product Name	Code	Size (µm)
Reflex Arcane Metallic Gold	R-601F	2-13
Reflex Arcane Metallic Bronze	R-620F	2-13
Reflex Arcane Metallic Copper	R-640F	2-13
Reflex Arcane Metallic Russet	R-660F	2-13



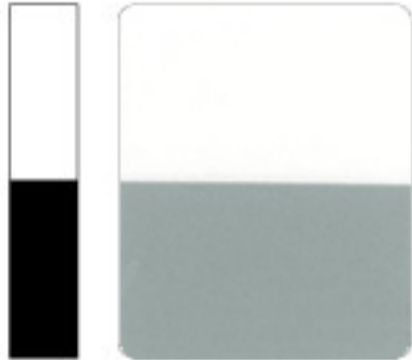
## Particle Size Distribution

Particle size distribution measured by laser diffraction  
Instrument: Malvern Mastersizer 2000



# REFLEX Arcane Pearl Pigment

## *REFLEX Arcane White Series*



Reflex Rutile Arcane White  
**R-903F**  
Size( $\mu\text{m}$ ) 2-16

## *REFLEX Arcane Interference Series*



Reflex Rutile Arcane Gold  
**R-701F**  
Size( $\mu\text{m}$ ) 2-13



Reflex Rutile Arcane Red  
**R-741F**  
Size( $\mu\text{m}$ ) 2-13



Reflex Rutile Arcane Violet  
**R-761F**  
Size( $\mu\text{m}$ ) 2-13

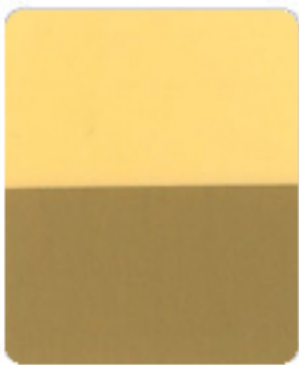


Reflex Rutile Arcane Blue  
**R-781F**  
Size( $\mu\text{m}$ ) 2-13

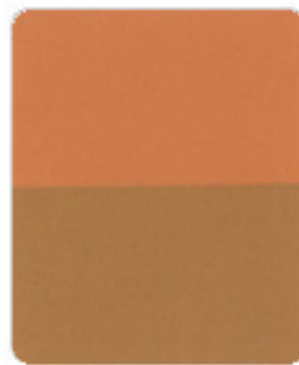


Reflex Rutile Arcane Green  
**R-791F**  
Size( $\mu\text{m}$ ) 2-13

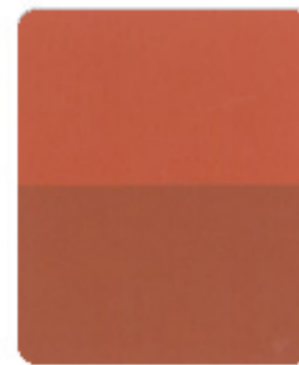
## *REFLEX Arcane Metallic Series*



Reflex Arcane Metallic Gold  
**R-601F**  
Size( $\mu\text{m}$ ) 2-13



Reflex Arcane Metallic Bronze  
**R-620F**  
Size( $\mu\text{m}$ ) 2-13



Reflex Arcane Metallic Copper  
**R-640F**  
Size( $\mu\text{m}$ ) 2-13



Reflex Arcane Metallic Russet  
**R-660F**  
Size( $\mu\text{m}$ ) 2-13

## REFLEX Arcane White Pearl Technical Data

Code	Product Name	Particle Size( $\mu\text{m}$ ) (D10-D90)	Particle Size( $\mu\text{m}$ ) (D50)	pH (10% Sol.)	Composition			
					KMg <sub>3</sub> AlSi <sub>3</sub> O <sub>10</sub> F <sub>2</sub>	SnO <sub>2</sub>	TiO <sub>2</sub>	Fe <sub>2</sub> O <sub>3</sub>
R-903F	Reflex Rutile Arcane White	2 - 16	6 - 8	5 - 10	○	○	○	

## REFLEX Arcane Interference Pearl Technical Data

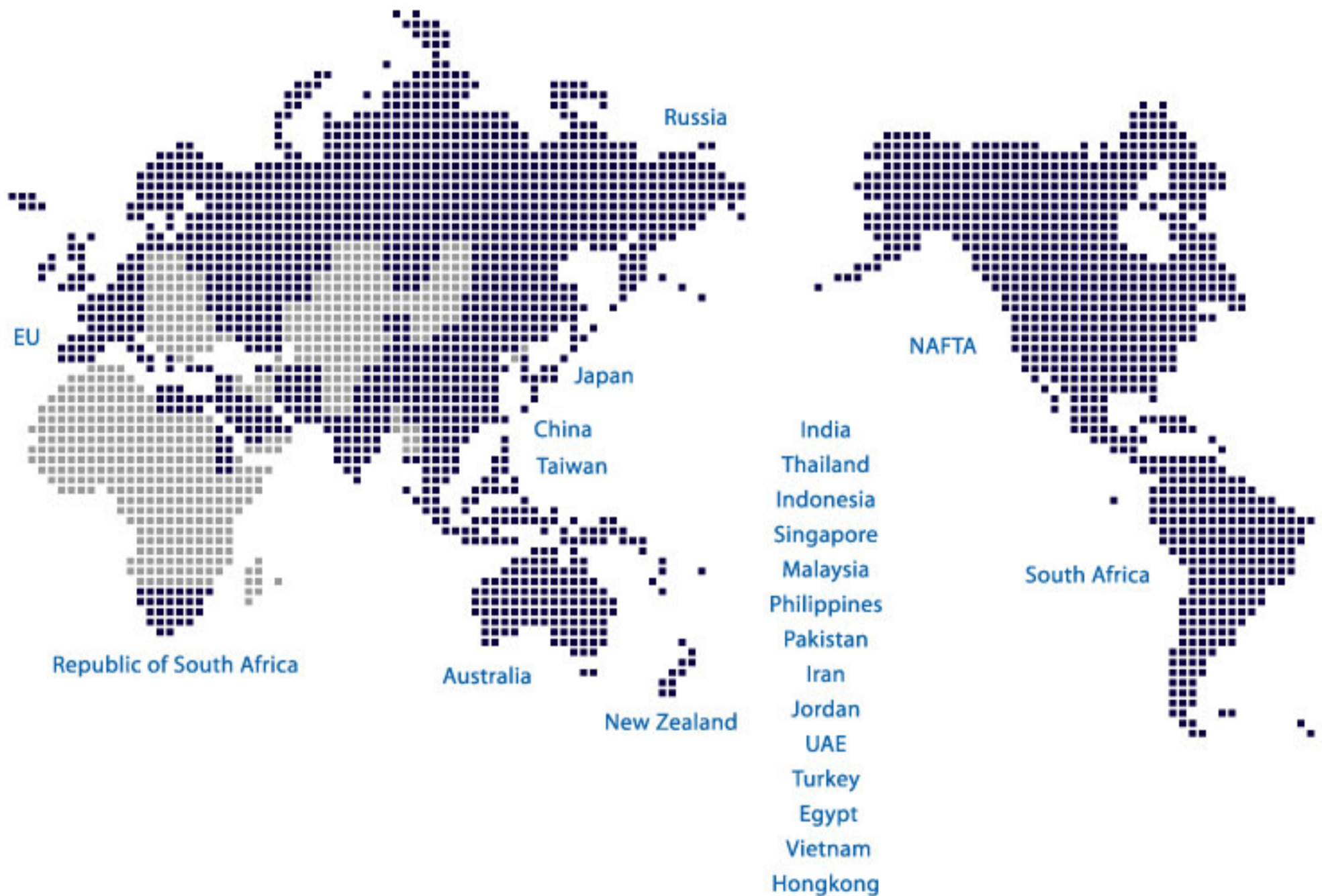
Code	Product Name	Particle Size( $\mu\text{m}$ ) (D10-D90)	Particle Size( $\mu\text{m}$ ) (D50)	pH (10% Sol.)	Composition			
					KMg <sub>3</sub> AlSi <sub>3</sub> O <sub>10</sub> F <sub>2</sub>	SnO <sub>2</sub>	TiO <sub>2</sub>	Fe <sub>2</sub> O <sub>3</sub>
R-701F	Reflex Rutile Arcane Gold	2 - 13	5 - 7	5 - 10	○	○	○	
R-741F	Reflex Rutile Arcane Red	2 - 13	5 - 7	5 - 10	○	○	○	
R-761F	Reflex Rutile Arcane Violet	2 - 13	5 - 7	5 - 10	○	○	○	
R-781F	Reflex Rutile Arcane Blue	2 - 13	5 - 7	5 - 10	○	○	○	
R-791F	Reflex Rutile Arcane Green	2 - 13	5 - 7	5 - 10	○	○	○	

## REFLEX Arcane Focus Metallic Pearl Technical Data

Code	Product Name	Particle Size( $\mu\text{m}$ ) (D10-D90)	Particle Size( $\mu\text{m}$ ) (D50)	pH (10% Sol.)	Composition			
					KMg <sub>3</sub> AlSi <sub>3</sub> O <sub>10</sub> F <sub>2</sub>	SnO <sub>2</sub>	TiO <sub>2</sub>	Fe <sub>2</sub> O <sub>3</sub>
R-601F	Reflex Arcane Metallic Gold	2 - 13	5 - 7	5 - 10	○	○	○	○
R-620F	Reflex Arcane Metallic Bronze	2 - 13	5 - 7	7 - 11	○			○
R-640F	Reflex Arcane Metallic Copper	2 - 13	5 - 7	7 - 11	○			○
R-660F	Reflex Arcane Metallic Russet	2 - 13	5 - 7	7 - 11	○			○

# CQV GLOBAL NETWORK

"World Leading Pigment Material Provider"



## 씨큐브 주식회사

충청북도 진천군 진천읍 송두리 450  
T. 043 531 2500  
F. 043 536 0314  
<http://www.cqv.co.kr>

450 Songdu-Ri, Jincheon-Eup, Jincheon-Gun,  
ChungCheong Buk-Do, Korea  
T. 82 43 531 2500  
F. 82 43 536 0314  
<http://www.cqv.co.kr>