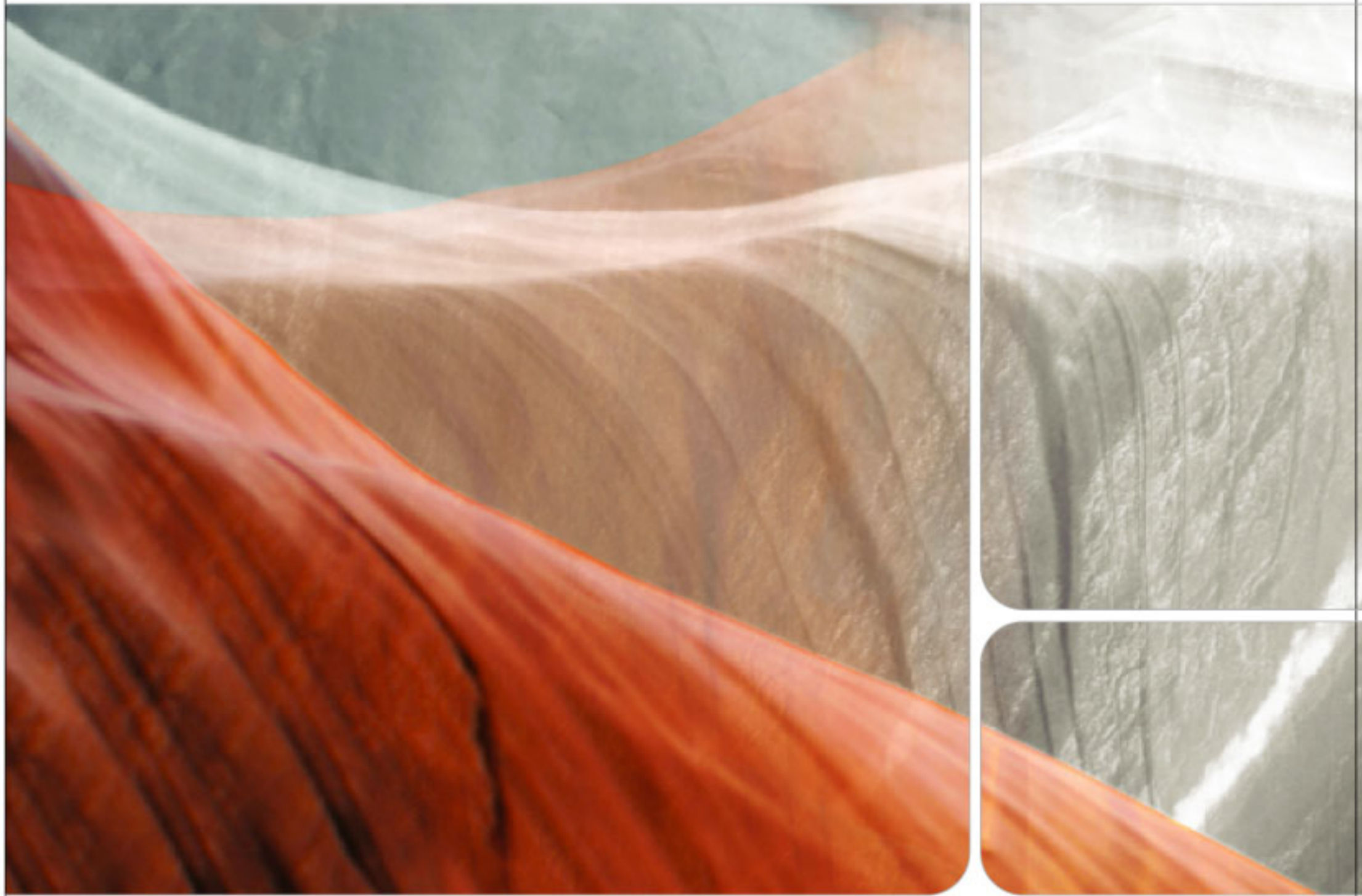


INDUSTRIAL USE

REFLEX™

Arcane Series



The World Quality Leader in
Effect Pigments Technology



Reflex Arcane Product Info.



Features

- Titanium dioxide or Iron oxide coated on Synthetic Fluorophlogopite
- Soft Focus Effect Pearl Pigment
- Low luster with excellent coverage
- Superior tactile properties
- Smooth and Silky Effect

Applications

Reflex Applications for...

- Paints
- Plastic
- Ink and prints
- Wall papers
- Floorings
- Artificial leather
- Powder coating & Etc
- Paper coatings

Specifications

- **Particle Size (D10 - D90)** : 2 ~ 13 μ m
- **pH** : 5.0 ~ 10.0 (Interference, Metallic Gold)
- **pH** : 7.0 ~ 11.0 (Metallics)
- **Loss on Drying** : 0.5% max.
- **Trace Elements**
 - Cd, Hg, Pb, Cr⁶⁺ Free
 - PBBs, PBDEs Free

REFLEX Arcane Product List

REFLEX Arcane White Series

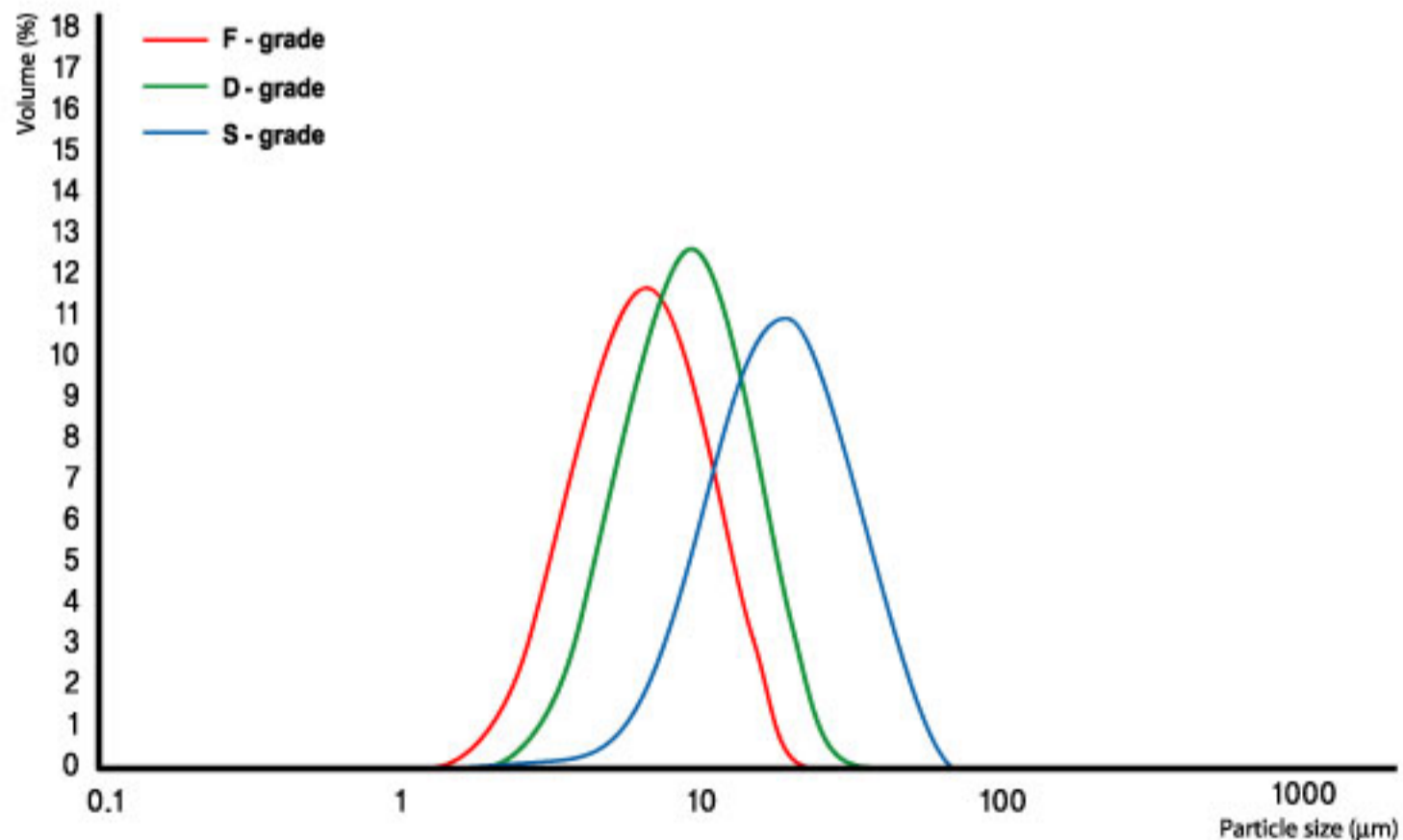
Product Name	Code	Size (μm)
Reflex Rutile Arcane White	R-903F	2-16

REFLEX Arcane Interference Series

Product Name	Code	Size (μm)
Reflex Rutile Arcane Gold	R-701F	2-13
Reflex Rutile Arcane Red	R-741F	2-13
Reflex Rutile Arcane Violet	R-761F	2-13
Reflex Rutile Arcane Blue	R-781F	2-13
Reflex Rutile Arcane Green	R-791F	2-13

REFLEX Arcane Metallic Series

Product Name	Code	Size (μm)
Reflex Arcane Metallic Gold	R-601F	2-13
Reflex Arcane Metallic Bronze	R-620F	2-13
Reflex Arcane Metallic Copper	R-640F	2-13
Reflex Arcane Metallic Russet	R-660F	2-13



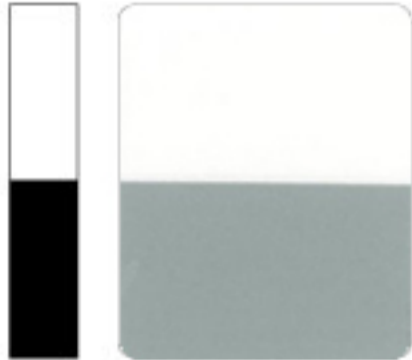
Particle Size Distribution

Particle size distribution measured by laser diffraction
Instrument: Malvern Mastersizer 2000



REFLEX Arcane Pearl Pigment

REFLEX Arcane White Series



Reflex Rutile Arcane White
R-903F
Size(μm) 2-16

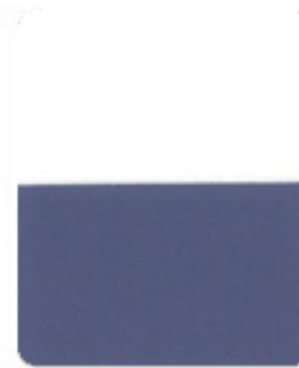
REFLEX Arcane Interference Series



Reflex Rutile Arcane Gold
R-701F
Size(μm) 2-13



Reflex Rutile Arcane Red
R-741F
Size(μm) 2-13



Reflex Rutile Arcane Violet
R-761F
Size(μm) 2-13

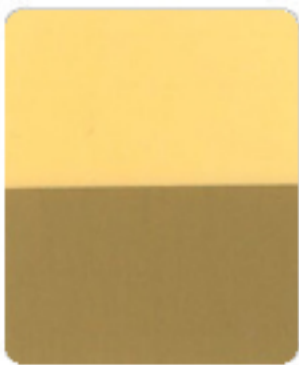


Reflex Rutile Arcane Blue
R-781F
Size(μm) 2-13

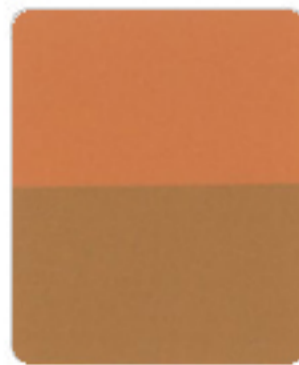


Reflex Rutile Arcane Green
R-791F
Size(μm) 2-13

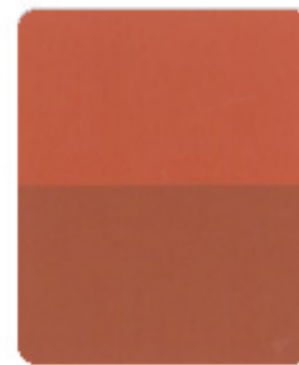
REFLEX Arcane Metallic Series



Reflex Arcane Metallic Gold
R-601F
Size(μm) 2-13



Reflex Arcane Metallic Bronze
R-620F
Size(μm) 2-13



Reflex Arcane Metallic Copper
R-640F
Size(μm) 2-13



Reflex Arcane Metallic Russet
R-660F
Size(μm) 2-13

REFLEX Arcane White Pearl Technical Data

Code	Product Name	Particle Size(μm) (D10-D90)	Particle Size(μm) (D50)	pH (10% Sol.)	Composition			
					KMg ₃ AlSi ₃ O ₁₀ F ₂	SnO ₂	TiO ₂	Fe ₂ O ₃
R-903F	Reflex Rutile Arcane White	2 - 16	6 - 8	5 - 10	○	○	○	

REFLEX Arcane Interference Pearl Technical Data

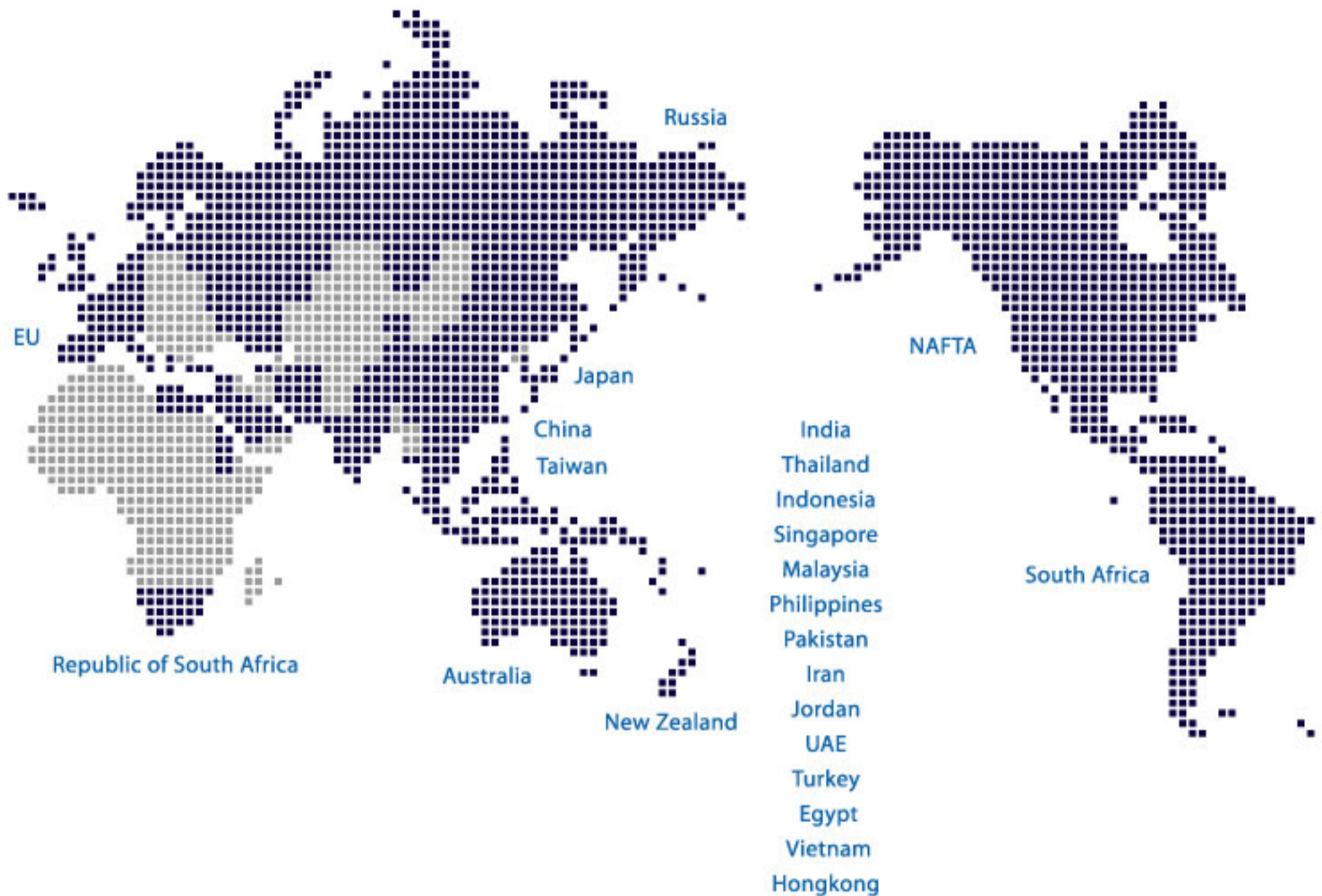
Code	Product Name	Particle Size(μm) (D10-D90)	Particle Size(μm) (D50)	pH (10% Sol.)	Composition			
					KMg ₃ AlSi ₃ O ₁₀ F ₂	SnO ₂	TiO ₂	Fe ₂ O ₃
R-701F	Reflex Rutile Arcane Gold	2 - 13	5 - 7	5 - 10	○	○	○	
R-741F	Reflex Rutile Arcane Red	2 - 13	5 - 7	5 - 10	○	○	○	
R-761F	Reflex Rutile Arcane Violet	2 - 13	5 - 7	5 - 10	○	○	○	
R-781F	Reflex Rutile Arcane Blue	2 - 13	5 - 7	5 - 10	○	○	○	
R-791F	Reflex Rutile Arcane Green	2 - 13	5 - 7	5 - 10	○	○	○	

REFLEX Arcane Focus Metallic Pearl Technical Data

Code	Product Name	Particle Size(μm) (D10-D90)	Particle Size(μm) (D50)	pH (10% Sol.)	Composition			
					KMg ₃ AlSi ₃ O ₁₀ F ₂	SnO ₂	TiO ₂	Fe ₂ O ₃
R-601F	Reflex Arcane Metallic Gold	2 - 13	5 - 7	5 - 10	○	○	○	○
R-620F	Reflex Arcane Metallic Bronze	2 - 13	5 - 7	7 - 11	○			○
R-640F	Reflex Arcane Metallic Copper	2 - 13	5 - 7	7 - 11	○			○
R-660F	Reflex Arcane Metallic Russet	2 - 13	5 - 7	7 - 11	○			○

CQV GLOBAL NETWORK

"World Leading Pigment Material Provider"



씨큐브 주식회사

충청북도 진천군 진천읍 송두리 450
T. 043 531 2500
F. 043 536 0314
<http://www.cqv.co.kr>

450 Songdu-Ri, Jincheon-Eup, Jincheon-Gun,
ChungCheong Buk-Do, Korea
T. 82 43 531 2500
F. 82 43 536 0314
<http://www.cqv.co.kr>