

COSMETIC USE

SKOLOR™

Natural & Glare Pearl Effect Pigment



*The World Quality Leader in
Effect Pigments Technology* >>>>>>



Creation of Quality Value

Skolor Product Info.

Brand of Substrate

- **NMP**(Natural Mica Based Pearl)Series : SKOLOR NATURAL
- **GBP**(Glass Based Pearl) : SKOLOR GLARE

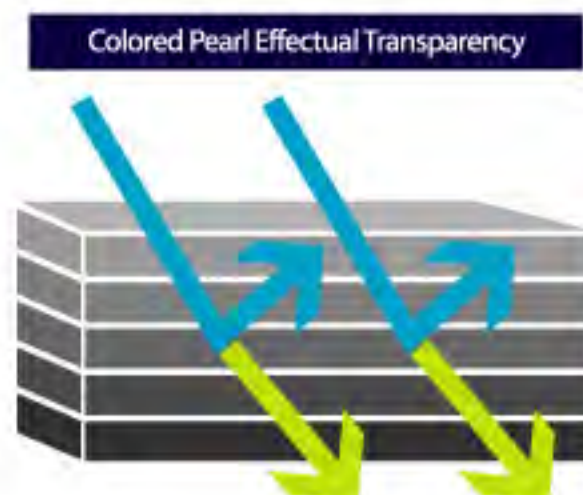
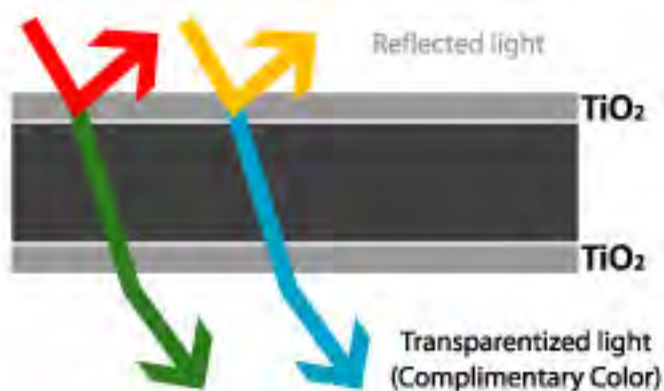
Coated Pigment Line

- Only Red(Carmine) coating Product.
- Red(Carmine) and Red(Iron Oxide) coating Product.
- Red(Carmine) and Blue(Ferric Ferrocyanide) coating Product.
- Only Blue(Ferric Ferrocyanide) coating Product.
- Red(Iron Oxide) and Blue(Ferric Ferrocyanide) coating Product.
- Only Black(Titanium Black) coating Product.

Feature

Transparency comparison between Pearl and Colored Pearl

Interference



High
QUALITY

Various
PRODUCTS

Speedy
DELIVERY

Rational
PRICE

Speedy
FEED-BACK

SKOLOR NATURAL

Pearl Effect Pigments

SKOLOR天然製品は天然マイカに吸収顔料をコーティングした製品で、干渉色相と吸収顔料の色相を同時に表現できます。

また、優秀な塗り心地と隠蔽力を持っていて既存製品とは異なる色感が表現できます。

ほとんどの吸収顔料は機械的分散工程(Ex:Atomizer, 3-Roll Miller)を経なければならなかったが、この製品はその工程一切を省略できます。

それだから工程費用対効果を考えれば、生産単価が下げられるのは言うまでもないでしょう。

すなわち、工程省略による価格競争力の向上が最大の強みです。

Special Features

- 高光沢、高彩度、優れた透明性と色感
- マルチカラー効果
- 優秀な塗り心地
- 多彩なカラー
- あらゆる分野に適用可能

Applications

化粧品用

- フェース・パウダー
- ファウンデーション
- 口紅
- アイシャドー
- 美容、ボディー製品



SKOLOR NATURAL

Pearl Effect Pigments Product List

SKOLOR NATURAL Series

Product Name	Code	Size (μm)
Skolor Camellia Red	SN-5441S	8-50
Skolor Rose Red	SN-5443S	8-50
Skolor Camellia Duplex R/B	SN-5841S	8-50
Skolor Daisy Red	SN-5445S	8-50
Skolor Sage Violet	SN-5643S	8-50
Skolor Amamone Deep Violet	SN-5661S	8-50
Skolor Time Noble Dawn	SN-5961S	8-50
Skolor Pansy Deep Blue Pearl	SN-5883S	8-50
Skolor Pansy Blue	SN-5887S	8-50
Skolor Lavandula Blue	SN-5889S	8-50
Skolor Rosemary Green	SN-5981S	8-50
Skolor Mint Green	SN-5993S	8-50
Skolor Snow Silver	SN-8010S	8-50
Skolor Natural Onyx Black	SN-1010S	8-50



SKOLOR NATURAL

Pearl Effect Pigments

SKOLOR NATURAL Series



Skolor Camellia Red
SN-5441S
Size(μm)8-50



Skolor Rose Red
SN-5443S
Size(μm)8-50



Skolor Camellia Duplex R/B
SN-5841S
Size(μm)8-50



Skolor Daisy Red
SN-5445S
Size(μm)8-50



Skolor Sage Violet
SN-5643S
Size(μm)8-50



Skolor Amamone Deep Violet
SN-5661S
Size(μm)8-50



Skolor Time Noble Dawn
SN-5961S
Size(μm)8-50



Skolor Pansy Deep Blue Pearl
SN-5883S
Size(μm)8-50



Skolor Pansy Blue
SN-5887S
Size(μm)8-50



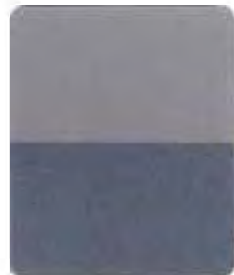
Skolor Lavandula Blue
SN-5889S
Size(μm)8-50



Skolor Rosemary Green
SN-5981S
Size(μm)8-50



Skolor Mint Green
SN-5993S
Size(μm)8-50



Skolor Snow Silver
SN-8010S
Size(μm)8-50



Skolor Natural Onyx Black
SN-1010S
Size(μm)8-50

SKOLOR NATURAL

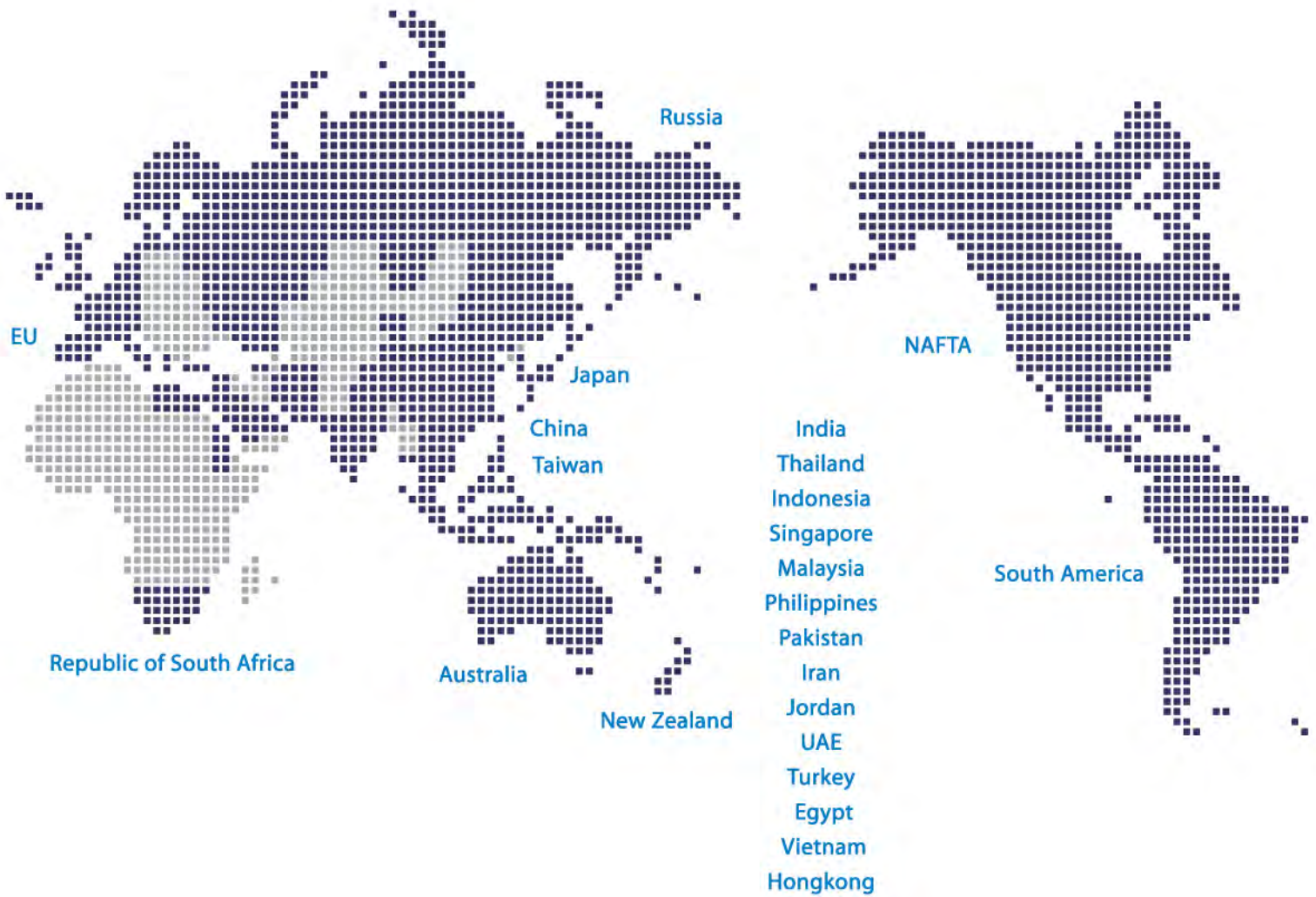
Pearl Effect Pigments Technical Data

Code	Product Name	Particle Size(µm) (D10-D90)	Particle Size(µm) (D50)	pH (10% Sol.)	Composition							
					Mica	SnO ₂	TiO ₂	Carmin (CI 75470)	Iron Oxide (CI 77491)	Ferric Ferrocyanide (CI 77510)	Iron Oxide Black (CI 77499)	Titan Black
SN-5441S	Skolor Camellia Red	8 - 50	20 - 24	4 - 8	○	○	○	○				
SN-5443S	Skolor Rose Red	8 - 50	20 - 24	4 - 8	○	○	○	○				
SN-5841S	Skolor Camellia Duplex R/B	8 - 50	20 - 24	4 - 8	○	○	○	○				
SN-5445S	Skolor Daisy Red	8 - 50	20 - 24	4 - 8	○	○	○	○	○			
SN-5643S	Skolor Sage Violet	8 - 50	20 - 24	4 - 8	○	○	○	○	○			
SN-5661S	Skolor Amamone Deep Violet	8 - 50	20 - 24	4 - 8	○	○	○	○		○		
SN-5961S	Skolor Time Noble Dawn	8 - 50	20 - 24	4 - 8	○	○	○	○		○		
SN-5883S	Skolor Pansy Deep Blue Pearl	8 - 50	20 - 24	4 - 7	○	○	○			○		
SN-5887S	Skolor Pansy Blue	8 - 50	20 - 24	3 - 7	○	○	○			○		
SN-5889S	Skolor Lavandula Blue	8 - 50	20 - 24	3 - 7	○	○	○			○		
SN-5981S	Skolor Rosemary Green	8 - 50	20 - 24	3 - 7	○	○	○			○		
SN-5993S	Skolor Mint Green	8 - 50	20 - 24	3 - 7	○	○	○		○	○		
SN-8010S	Skolor Snow Silver	8 - 50	20 - 24	6 - 10	○		○					○
SN-1010S	Skolor Natural Onyx Black	8 - 50	20 - 24	7 - 11	○		○				○	

- Carmine(CI No. 75470) is partially soluble above pH 7 and unstable under high temperature. Therefore this product should not be heated above 110°C(212°F)
- Ferric ferrocyanide(CI No. 77510) is unstable to alkali and some salts. Therefore this product should not be used in alkaline formulations

CQV GLOBAL NETWORK

"World Leading Pigment Material Provider"



씨큐브 주식회사

충북 진천군 진천읍 성중로 144번지
T. 043 531 2500
F. 043 536 0314
<http://www.cqv.co.kr>

144, Seongjung-ro, Jincheon-Eup, Jincheon-Gun,
ChungCheong Buk-Do, Korea
T. 82 43 531 2500
F. 82 43 536 0314
<http://www.cqv.co.kr>