

Econa<sup>®</sup>

Natural plant extract treated pearlescent pigments



The world's leader in  
quality effect pigment technology



# Econa<sup>®</sup> Product Info.

- Natural plant extract treated colored pearlescent pigments.
- Synthetic fluorphlogopite and Natural mica based pearlescent pigments.
- Better stable colored pearlescent pigments than current colored pearlescent pigments products.

- Alternative to carmine and ferric ferrocyanide.
- Red, blue and Black, Yellow color available.  
(Red : Caesalpinia sappan Bark Extract)  
(Blue : Indigofera Tinctoria Leaf Extract)  
(Black : Charcoal powder coated Black effect pigment)  
(Yellow : Carthamus Tinctorius (Safflower) flower Extract)
- All ingredients were registered in ICID.
- Parabens free and No animal testing.
- No contain the health and environmental hazard materials.
- Conforms global cosmetic regulations.  
(US, EU, China and Japan etc.)

High  
QUALITY

Various  
PRODUCTS

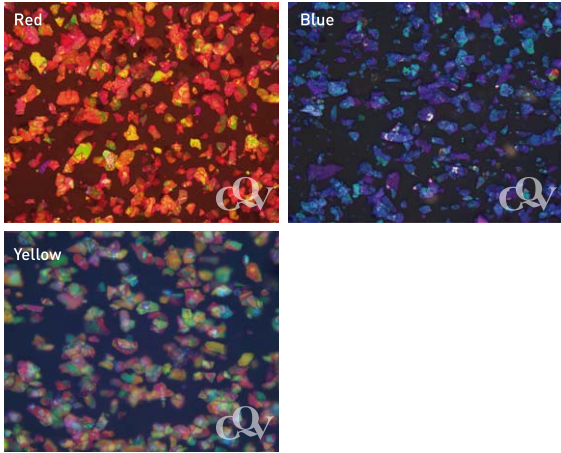
Timely  
DELIVERY

Rational  
PRICE

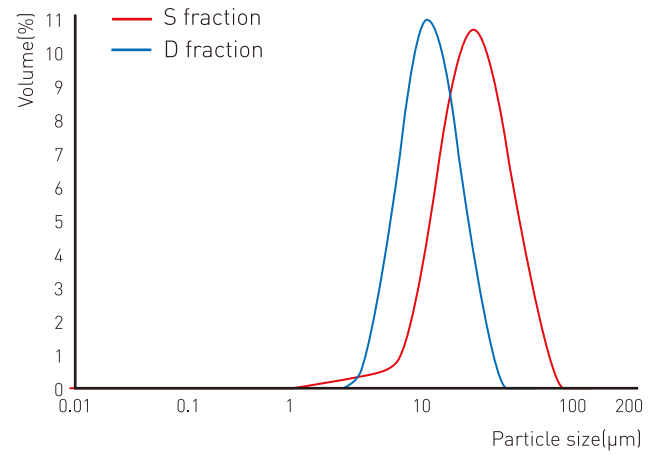
Rapid  
FEED-BACK

## Microscopic pictures

pigment rate : 2wt%, on black background



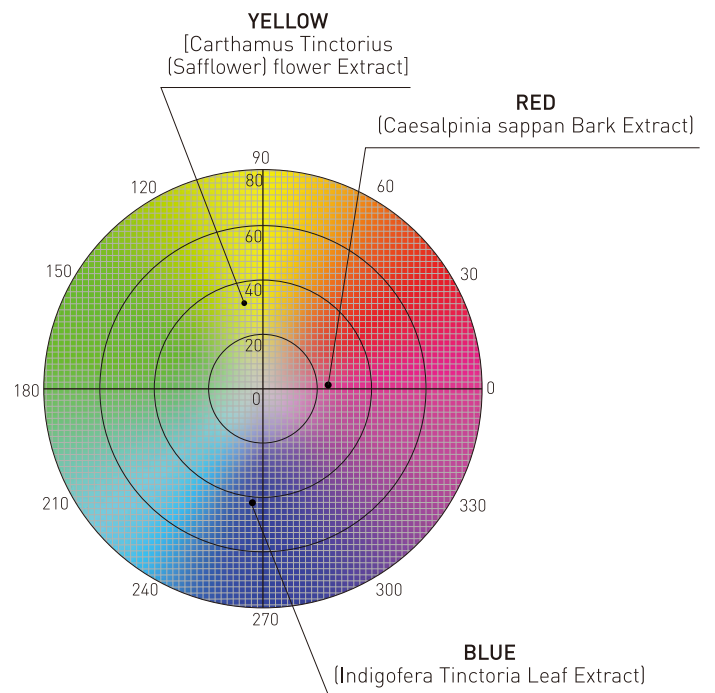
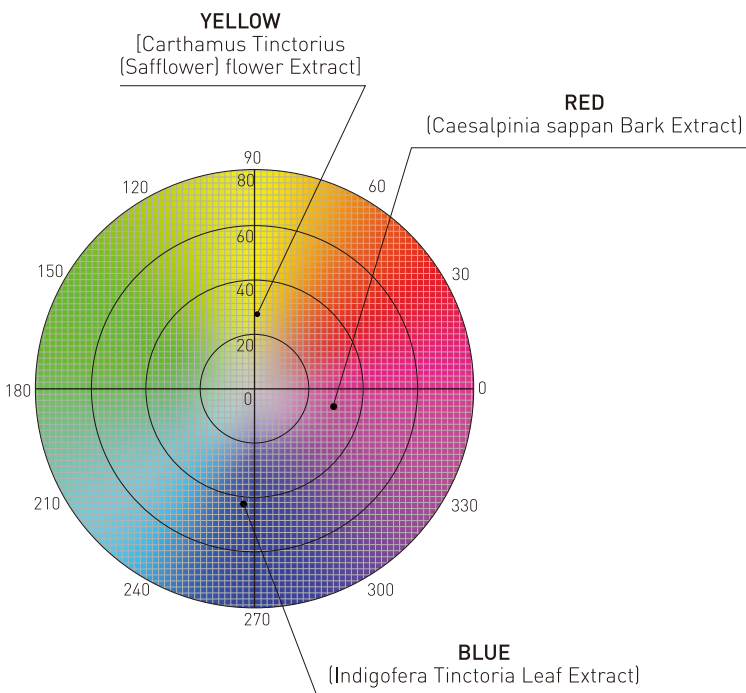
## Particle size distribution



## Color coordinates

On black background

Powder tone



# Econa<sup>®</sup>

Natural plant extract treated  
pearlescent pigments

Econa<sup>®</sup> series are natural plant extract treated new colored pearlescent pigments on synthetic fluorophlogopite based pearlescent pigments.

Econa<sup>®</sup> series have better stability than current colored pearlescent pigments in many cosmetic formulations.

Econa<sup>®</sup> series can achieve stable effects using natural plant extract while existing colored pearlescent pigments for cosmetic use have less stability in many kinds of cosmetic field by influence of surface treatment materials. Econa<sup>®</sup> series shall give you more chances to apply for more variable cosmetic products.

## Special Features

- Pearlescent pigments treated with natural plant extracts
- Alternative to carmine and ferric ferrocyanide
- Four colors available (Red, Blue, Black, Yellow)
- Easy to disperse
- Applicable for a wide variety of cosmetic products

## Applications

- Eye related products
- Lip related products
- Nail enamel products
- Body and Beauty products



# Econa®

## Natural plant extract treated pearlescent pigments Product List

### Synthetic Fluorophlogopite Based Pearlescent Pigments

| Product Name                         | Code           | Size(µm) |
|--------------------------------------|----------------|----------|
| Econa® S-7443D Super Fine Sappan Red | Econa® S-7443D | 5 - 27   |
| Econa® S-7441S Sappan Red            | Econa® S-7441S | 9 - 50   |
| Econa® S-7443S Super Sappan Red      | Econa® S-7443S | 9 - 50   |
| Econa® S-7881D Fine Indigo Blue      | Econa® S-7881D | 5 - 27   |
| Econa® S-7881S Indigo Blue           | Econa® S-7881S | 9 - 50   |
| Econa® S-7021D Fine Mango Yellow     | Econa® S-7021D | 5 - 27   |
| Econa® S-1010D Dark Night            | Econa® S-1010D | 3 - 25   |

# Econa<sup>®</sup>

## Natural plant extract treated pearlescent pigments

Synthetic fluorophlogopite based pearlescent pigments



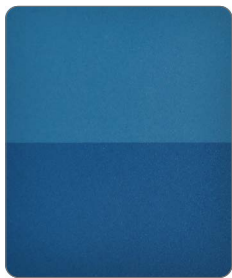
Econa<sup>®</sup> S-7443D Super Fine Sappan Red  
**Econa<sup>®</sup> S-7443D**  
Size(μm) 5 - 27



Econa<sup>®</sup> S-7441S Sappan Red  
**Econa<sup>®</sup> S-7441S**  
Size(μm) 9 - 50



Econa<sup>®</sup> S-7443S Super Sappan Red  
**Econa<sup>®</sup> S-7443S**  
Size(μm) 9 - 50



Econa<sup>®</sup> S-7881D Fine Indigo Blue  
**Econa<sup>®</sup> S-7881D**  
Size(μm) 5 - 27



Econa<sup>®</sup> S-7881S Indigo Blue  
**Econa<sup>®</sup> S-7881S**  
Size(μm) 9 - 50



Econa<sup>®</sup> S-7021D Fine Mango Yellow  
**Econa<sup>®</sup> S-7021D**  
Size(μm) 5 - 27



Econa<sup>®</sup> S-1010D Dark Night  
**Econa<sup>®</sup> S-1010D**  
Size(μm) 3 - 25

# Econa®

## Natural plant extract treated pearlescent pigments Technical Data

Synthetic fluorophlogopite based pearlescent pigments

| Code           | Product Name                         | Particle Size(µm) |         | pH<br>(10% Sol.) | Composition   |                  |                  |                                    |                                      |   |                    |   |
|----------------|--------------------------------------|-------------------|---------|------------------|---|------------------|------------------|------------------------------------|--------------------------------------|---|--------------------|---|
|                |                                      | (D10-D90)         | (D50)   |                  | KMg <sub>3</sub> AlSi <sub>3</sub> O <sub>10</sub> F <sub>2</sub> | SnO <sub>2</sub> | TiO <sub>2</sub> | Caesalpinia Sappan<br>Bark Extract | Indigofera Tinctoria<br>Leaf Extract | Carthamus<br>Tinctorius (Safflower)<br>flower Extract | Charcoal<br>Powder |   |
| Econa® S-7443D | Econa® S-7443D Super Fine Sappan Red | 5 - 27            | 11 - 15 | 4 - 8            | ○   | ○                | ○                | ○                                  |                                      |   |                    |   |
| Econa® S-7441S | Econa® S-7441S Sappan Red            | 9 - 50            | 22 - 26 | 4 - 8            | ○   | ○                | ○                | ○                                  |                                      |   |                    |   |
| Econa® S-7443S | Econa® S-7443S Super Sappan Red      | 9 - 50            | 22 - 26 | 4 - 8            | ○   | ○                | ○                | ○                                  |                                      |   |                    |   |
| Econa® S-7881D | Econa® S-7881D Fine Indigo Blue      | 5 - 27            | 11 - 15 | 4 - 8            | ○   | ○                | ○                |                                    | ○                                    |   |                    |   |
| Econa® S-7881S | Econa® S-7881S Indigo Blue           | 9 - 50            | 22 - 26 | 4 - 8            | ○   | ○                | ○                |                                    | ○                                    |   |                    |   |
| Econa® S-7021D | Econa® S-7021D Fine Mango Yellow     | 5 - 27            | 11 - 15 | 4 - 8            | ○   | ○                | ○                |                                    |                                      | ○   |                    |   |
| Econa® S-1010D | Econa® S-1010D Dark Night            | 3 - 25            | 8 - 12  | 4 - 8            | ○   |                  |                  |                                    |                                      |   |                    | ○ |

# CQV GLOBAL NETWORK

“Global Supplier of High Quality Effect Pigment Technologies.”



Creation of Quality Value

## 씨큐브 주식회사

충북 진천군 진천읍 성중로 144번지

T. 043 531 2500

F. 043 536 0314

<http://www.cqv.co.kr>

144, Seongjung-ro, Jincheon-Eup, Jincheon-Gun,  
ChungCheong Buk-Do, Korea

T. 82 43 531 2500

F. 82 43 536 0314

<http://www.cqv.co.kr>